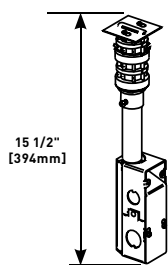


# FIT SERIES™ POKE-THRU DEVICES

## FIT Series Poke-Thru Devices Ordering information

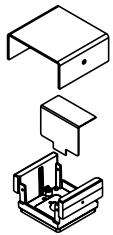
### FIT 2" [51mm] Poke-Thru Insert with Junction Box Assembly



1" trade size barriered conduit. Also includes BX/MC cable connector. Must be activated with 200 Series or 241 Series Service Head and FIFP or FP Series Faceplates (sold separately) to maintain UL Listing and/or Classification.

**NOTE:** FIT Series Poke-Thru Devices require a minimum 2 1/32" [52mm], 2 1/8" [54mm] maximum diameter hole.

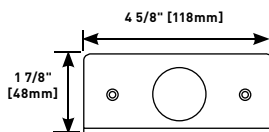
### 200-H/BTC Housing & Base



Single width. For 200 Series Service Head. Barrier included (may not be needed on single service applications). Base has a 3/4" trade size knockout for connection to FIT insert. Also includes scrub water gasket.

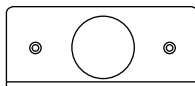
**NOTE:** Assembled with scrub water gasket. For use on tile or carpet floors.

### FIFP-1.390 Faceplate



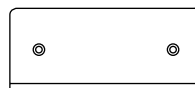
Single-gang with one 1.390" [35.3mm] receptacle opening.

### FIFP-1.562 Faceplate



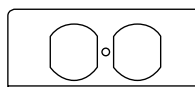
Single-gang with one 1.562" [39.7mm] receptacle opening.

### FIFP-B Faceplate



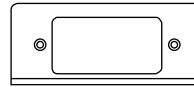
Single-gang, blank.

### FIFP-R Faceplate



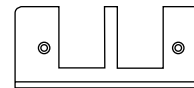
Single-gang with one duplex receptacle opening.

### FIFP-SS Faceplate



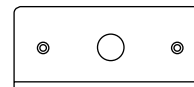
Single-gang with one surge suppression receptacle opening.

### FIFP-T Faceplate



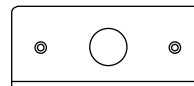
Single-gang faceplate with one telephone opening. Communication grommets included.

### FIFP50 Faceplate



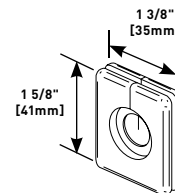
Single-gang with one 1/2" trade size knockout.

### FIFP75 Faceplate



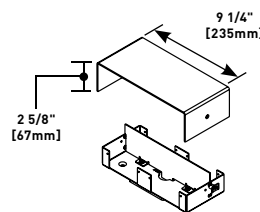
Single-gang with one 3/4" trade size knockout.

### TG-1 Communications Grommet



One set of two grommets.

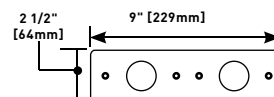
### 241-H/BTC Assembly & Base



Double width housing for 241 Series Service Head. Barrier included (may not be needed for single service applications). Base has a 3/4" trade size KO for connection to FIT insert. See faceplates on this page. Order two plates to complete service head assembly.

**NOTE:** Assembled with scrub water gasket. For use on tile or carpet floors.

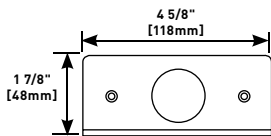
### FP1.390-1.390 Faceplate



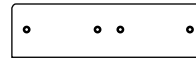
Two-gang with two 1.390" [35.3mm] receptacle openings.

## RC91GHBTC &amp; RC92GHBTC SERIES™ POKE-THRU DEVICES

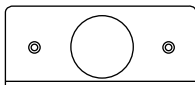
## Ordering Information

**FIFP-1.390 Faceplate**

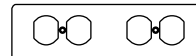
Single-gang with one 1.390" [35.3mm] receptacle opening.

**FPB-B Faceplate**

Two-gang faceplate – blank.

**FIFP-1.562 Faceplate**

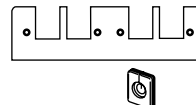
Single-gang with one 1.562" [39.7mm] receptacle opening.

**FP2R Faceplate**

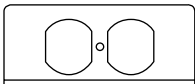
Two-gang faceplate with two duplex receptacle openings.

**FIFP-B Faceplate**

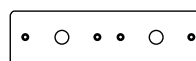
Single-gang, blank.

**FP2T Faceplate**

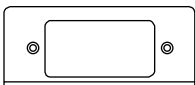
Two-gang faceplate with two communications openings.

**FIFP-R Faceplate**

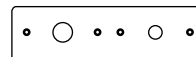
Single-gang with one duplex receptacle opening.

**FP50-50 Faceplate**

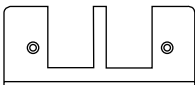
Two-gang with two 1/2" trade size knockouts.

**FIFP-SS Faceplate**

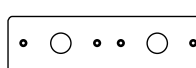
Single-gang with one surge suppression receptacle opening.

**FP75-50 Faceplate**

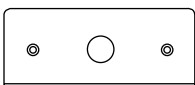
Two-gang with one 3/4" and one 1/2" trade size knockout.

**FIFP-T Faceplate**

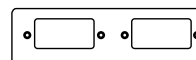
Single-gang faceplate with one telephone opening. Communication grommets included.

**FP75-75 Faceplate**

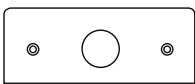
Two-gang with two 3/4" trade size knockouts.

**FIFP50 Faceplate**

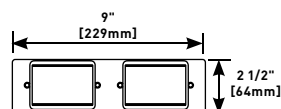
Single-gang with one 1/2" trade size knockout.

**FPSS-SS Faceplate**

Two-gang with two surge suppression device openings.

**FIFP75 Faceplate**

Single-gang with one 3/4" trade size knockout.

**FPACT-ACT Faceplate**

Two-gang faceplate with two 6A mini adapter openings. Two adapters included. Accepts Wiremold Open System communication modules.