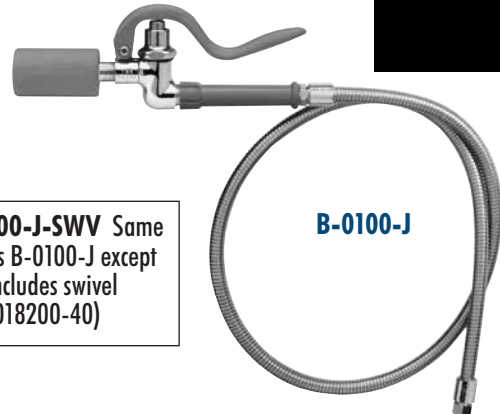


## B-0100-J Low Flow Pre-Rinse Spray Unit

**NEW! B-0100-J Low flow pre-rinse spray valve unit (1.07 GPM)**

- EPAAct 2005 compliant
- AB1953 and ANSI/NSF Standard 61 Compliant
- Consumes 60% less water than other EPAAct 2005 compliant valves (at 1.6 GPM)
- Powerful cleaning capability makes pre-rinse tasks easier
- Tough baked-on foods come off faster
- Designed for heavy-duty use in industrial kitchens
- Automatic shut-off valve with low flow spray head
- 3 ft. flexible stainless steel hose (B-0044-H); 48" (1219 mm) overall length
- 1/2" NPT male inlet (See "Adapter Chart" p. A33 for other adapters)
- Fan jet with knife action spray
- Includes hold-down ring (not shown)

Uses  
**B-0107-J  
NEW Spray  
Valve  
1.07 GPM**

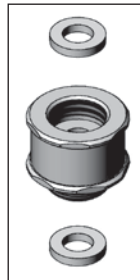


**B-100-J-SWV** Same as B-0100-J except includes swivel (018200-40)

**B-0100-J**

## 018200-40 Swivel For Pre-Rinse Spray Valves

- Includes: (1) 7/8-20 UN female and male swivel (2) replacement seals
- Allows a greater range of rotation and motion while using spray valves
- Retrofit between hose handle and spray body
- Makes spray valve assemblies more ergonomic
- Available for any T&S pre-rinse spray valve
- For B-0108 spray valve — attach swivel directly to spray valve



**NEW  
Swivel for  
Pre-Rinse  
Spray Valves**



**B-0100-SWV**

## Repair and Installation Kits

Note: Some individual items listed in parts kits may be ordered separately. Contact factory Customer Service representatives for availability.

### B-9K Lever Handle Kit

- Lever handle kit includes:
  - 1 (001661-45) Index button red (hot)
  - 1 (001660-45) Index button blue (cold)
  - 2 (000922-45) Lever handle screw
  - 2 (001638-45) Lever handle blank



### B-10K-J B-0107-J Repair Kit

- Parts included for the B-0107-J Spray Valve:
  - 2 (000895-45) Spring
  - 2 (000974-45) Bonnet washer brass
  - 2 (010476-45) #27 hose washer
  - 2 (001040-45) Bonnet binding washer
  - 2 (018292-45) Grey shield

**B-0107-J  
NEW Spray  
Valve  
1.07 GPM**

- 2 (001100-45) Packing Seal
- 2 (009306-20) Valve Stem
- 2 (012915-45) Seat Washer

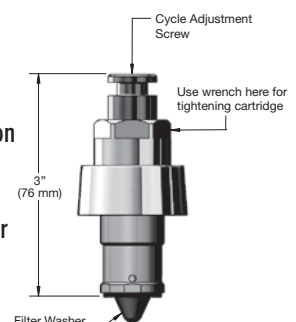
### B-010K-C Low Flow Spray Valve Repair Kit

- Repairs B-0107-C low-flow spray valves, and includes:
 

2 (000895-45) Spring	2 (002659-45) Shield
2 (000974-45) Bonnet washer	2 (001100-45) Packing seal
2 (010476-45) Washer for S/S hose	1 (009306-20) Valve stem
	2 (012915-45) Seat washer

### B-238RK 238A Metering Cartridge Repair Kit

- Parts included (for Push Button, Wrist Action and Pivot Action):
  - 1 (010150-45) Top washer
  - 1 (017182-45) Bottom seal filter washer
  - 1 (009391-45) 'O'-ring
  - 1 (012596-45) Bottom stem seal



## Eterna and Cerama Cartridges and Push Button and Wrist-Action Metering Cartridges

Our longstanding Eterna spindle assemblies are the standard on many T&S faucets and fittings. Our Cerama cartridges are designed for water conservation and are included in many new T&S foodservice and plumbing models. Look for the “-CR” suffix on our model numbers.

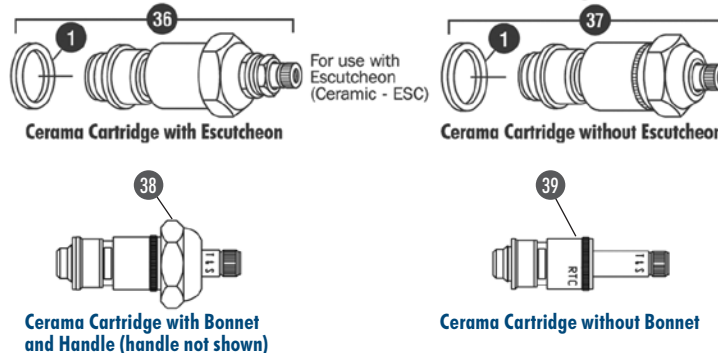
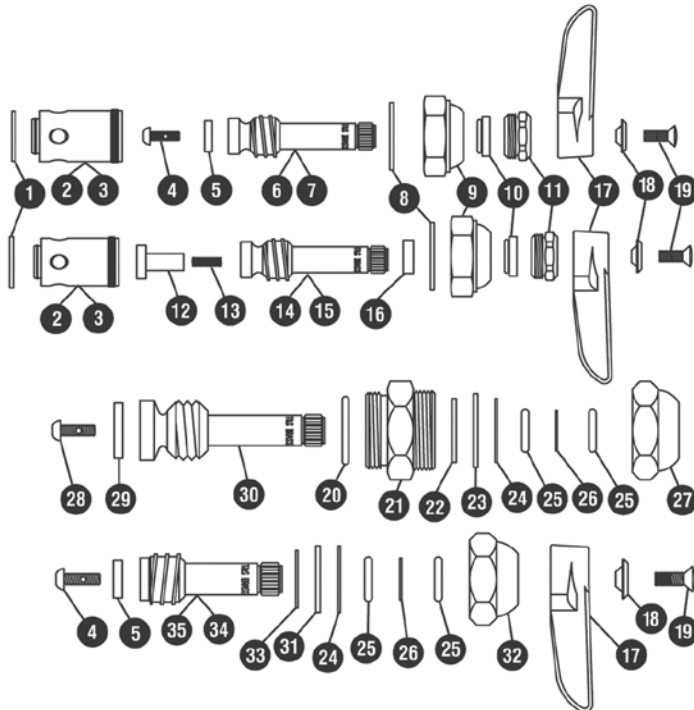
### Eterna Cartridge

### Eterna Cartridge with Spring Check

### Big-Flo Assembly

### B-1100 Series

### Ceramic Cartridges



#### For Standard Faucets

Ref. Part No. Hot Side 002714-40  
Cold Side 002713-40

#### For Standard Faucets – No Handle

Ref. Part No. Hot Side 005960-40  
Cold Side 005959-40

#### For Pre-Rinse Units

Ref. Part No. Hot Side 002712-40  
Cold Side 002711-40

#### For Pre-Rinse Units – No Handle

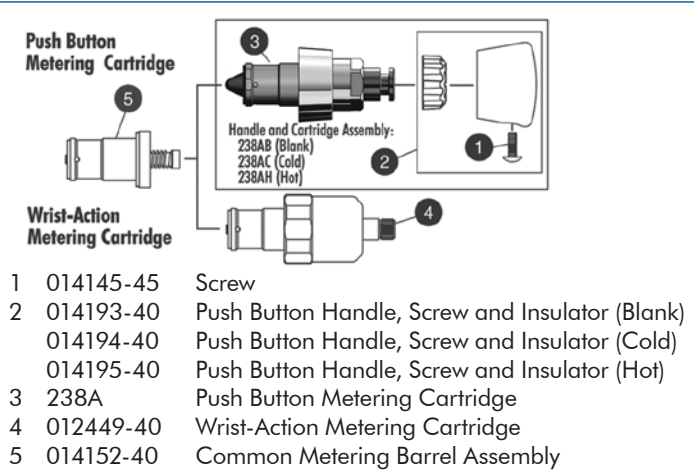
Ref. Part No. Hot Side 012443-40  
Cold Side 012442-40

Ref. Part No. Hot and Cold Side  
006482-40

Ref. Part No. Hot Side 002710-40  
Cold Side 002709-40

### 238A Push Button and Wrist-Action Metering Cartridges

See page A41 for metering cartridge repair kit (B-238RK)



- |   |           |   |
|---|-----------|---|
| 1 | 014145-45 | Screw   |
| 2 | 014193-40 | Push Button Handle, Screw and Insulator (Blank) |
|   | 014194-40 | Push Button Handle, Screw and Insulator (Cold)  |
|   | 014195-40 | Push Button Handle, Screw and Insulator (Hot)   |
| 3 | 238A      | Push Button Metering Cartridge                  |
| 4 | 012449-40 | Wrist-Action Metering Cartridge                 |
| 5 | 014152-40 | Common Metering Barrel Assembly                 |

#### Cerama Cartridge with Eterna Escutcheon Bonnet

36	011616-25	Hot
	011617-25	Cold
	011618-25	Hot with Check Valve
	011619-25	Cold with Check Valve

#### Cerama Cartridge with Bonnet

37	011278-25	Hot
	011279-25	Cold
	012394-25	Hot with Check Valve
	012395-25	Cold with Check Valve

#### Cerama Cartridge with Bonnet and Handle

38	012444-25	Hot
	012445-25	Cold
	012446-25	Hot with Check Valve
	012447-25	Cold with Check Valve

#### Cerama Cartridge without Bonnet

39	011276-45	Hot
	011277-45	Cold
	011311-25	Hot with Check Valve
	011312-25	Cold with Check Valve

## Eterna and Cerama Cartridges and Push Button and Wrist-Action Metering Cartridges

Our longstanding Eterna spindle assemblies are the standard on many T&S faucets and fittings. Our Cerama cartridges are designed for water conservation and are included in many new T&S foodservice and plumbing models. Look for the “-CR” suffix on our model numbers.

### Eterna Cartridge

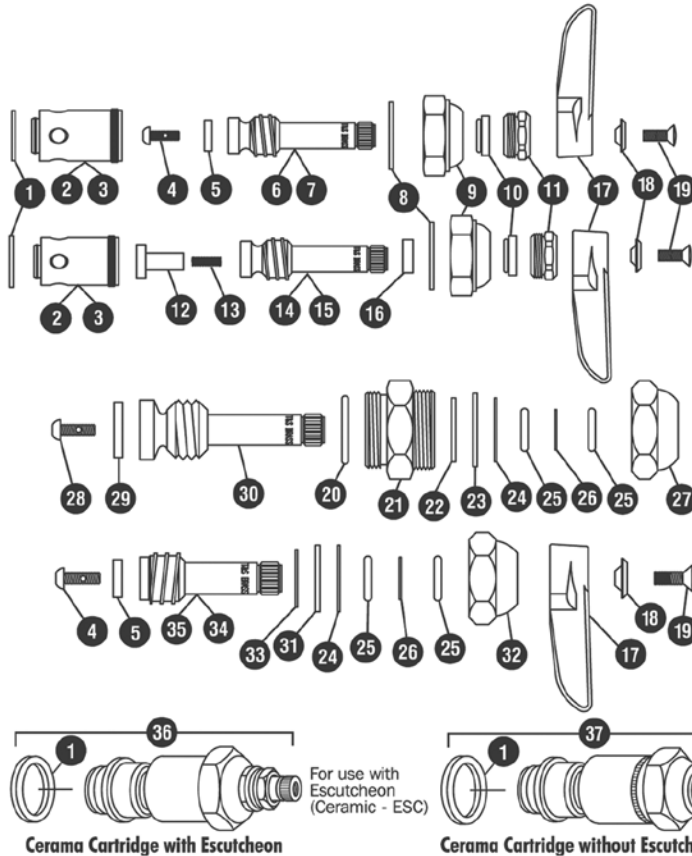
### Eterna Cartridge with Spring Check

### Big-Flo Assembly

### B-1100 Series

**C  
38**

### Ceramic Cartridges



Cerama Cartridge with Escutcheon

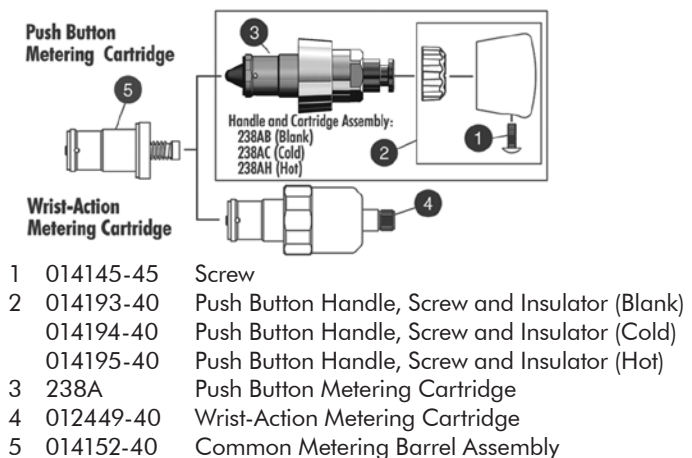
Cerama Cartridge without Escutcheon

Cerama Cartridge with Bonnet and Handle (handle not shown)

Cerama Cartridge without Bonnet

### 238A Push Button and Wrist-Action Metering Cartridges

See page C40 for metering cartridge repair kit (B-238RK)



- |   |           |   |
|---|-----------|---|
| 1 | 014145-45 | Screw   |
| 2 | 014193-40 | Push Button Handle, Screw and Insulator (Blank) |
|   | 014194-40 | Push Button Handle, Screw and Insulator (Cold)  |
|   | 014195-40 | Push Button Handle, Screw and Insulator (Hot)   |
| 3 | 238A      | Push Button Metering Cartridge                  |
| 4 | 012449-40 | Wrist-Action Metering Cartridge                 |
| 5 | 014152-40 | Common Metering Barrel Assembly                 |

#### For Standard Faucets

Ref. Part No. Hot Side 002714-40  
Cold Side 002713-40

#### For Standard Faucets – No Handle

Ref. Part No. Hot Side 005960-40  
Cold Side 005959-40

#### For Pre-Rinse Units

Ref. Part No. Hot Side 002712-40  
Cold Side 002711-40

#### For Pre-Rinse Units – No Handle

Ref. Part No. Hot Side 012443-40  
Cold Side 012442-40

Ref. Part No. Hot and Cold Side 006482-40

Ref. Part No. Hot Side 002710-40  
Cold Side 002709-40

For use with Escutcheon (Ceramic - ESC)

#### Cerama Cartridge with Eterna Escutcheon Bonnet

36	011616-25	Hot
	011617-25	Cold
	011618-25	Hot with Check Valve
	011619-25	Cold with Check Valve

#### Cerama Cartridge with Bonnet

37	011278-25	Hot
	011279-25	Cold
	012394-25	Hot with Check Valve
	012395-25	Cold with Check Valve

#### Cerama Cartridge with Bonnet and Handle

38	012444-25	Hot
	012445-25	Cold
	012446-25	Hot with Check Valve
	012447-25	Cold with Check Valve

#### Cerama Cartridge without Bonnet

39	011276-45	Hot
	011277-45	Cold
	011311-25	Hot with Check Valve
	011312-25	Cold with Check Valve