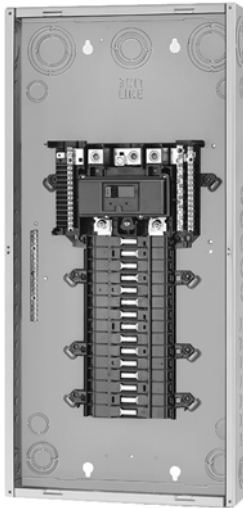


# QO® and Homeline® Load Centers and Enclosures

## General Information and Application Data



QO130M150



Indoor Cover



QO140M200RB



Bolt-On Hubs

### Indoor Enclosures (Type 1)

Welded sheet steel with knockouts at top, bottom, back, and sides  
Finish: gray baked enamel, electrodeposited over cleaned, phosphatized steel

Most 100 225 A indoor enclosures are 14.25 in. (362 mm) wide (see Dimensions and Knockouts on page 26)

300 A and 400 A indoor enclosures are 20 in. (508 mm) wide

Top or bottom feed by rotating enclosure

### Indoor Covers

Doors to cover circuit breaker handles, except on 2 4, 4 8, 6 12 , and 8 16 circuit models

Shutter-type twistouts

Flush and surface covers available, sold separately

Flush covers have automatic flush adjustment

Field-installed door lock provisions available on most covers

QOFP filler plates available for all covers

QOM1FP filler plates available for 100 1 25 A convertible load center covers

QOM2FP filler plates available for 150 2 25 A convertible load center covers

Q2FP filler plates available for 3-phase load center covers

Triple lead cover screws for fast cover installation

### Rainproof Enclosures (Type 3R)

Complete enclosure includes interior trim and door

Welded, galvanized steel

Finish: gray baked enamel, electrodeposited over cleaned, phosphatized, galvanized steel

RB devices have provisions for interchangeable bolt-on hub

Top-centered rainproof mounting boss on the back of the enclosure simplifies installation and saves time

Stainless steel door latch on the enclosure provides secure closure and maximum durability

Convertible main panels are side-hinge door devices

Allow 1.25 in. (32 mm) on the left side for the door to open

Side-hinged door provides full wiring access without door removal

### Bolt-On Hubs

Hubs available from 0.75 in. (19 mm) to 4 in. (102 mm) conduit size

No gasket required with hubs from 0.75 in. (19 mm) to 2.50 in. (64 mm) when used on RB type load centers

# **QO® Circuit Breaker Load Centers—Class 1130** **General Information and Application Data**

## **Accessories**



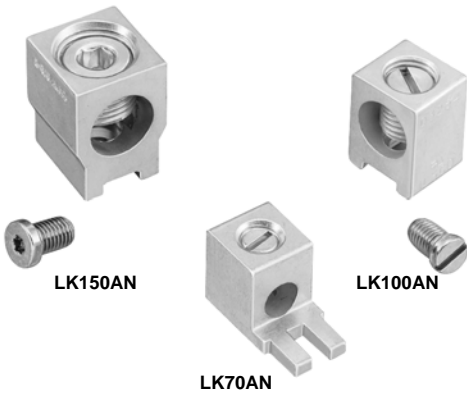
**PG18GTA Grounding Bar Kit**



**PK6FL Flush Lock Kit**



**PK4FL Flush Lock Kit**



**Auxiliary Neutral Lugs**

### **Grounding Bar Kits**

Field-installable in all load centers

Same wire size as terminals (see page 19)

Suitable for copper or aluminum wire

Available with #1 4/0 lug PK15GTA-L, PK18GTA-L, and PK23GTA-L (see page 19)

### **Flush Lock Kits**

Available for indoor load centers

Two keys provided with each lock kit

PK6FL for convertible 12 42 circuit load centers

PK4FL for 300 and 400 A load centers

### **Auxiliary Neutral Lugs**

UL Listed for copper or aluminum wire

Field-installable on neutral assembly

LK70AN: #12 #2 AWG Al or #14 #4 AWG Cu

LK100AN: #6 2/0 AWG (Al/Cu)

LK125AN: #14 2/0 AWG (Al/Cu)

LK150AN: #2 3/0 AWG (Al/Cu)

LK225AN: #4 3/0 kcmil (Al/Cu), use ONLY in Series S, 150 225 A QO® or Homeline® load center

### **Cover Filler Plates**

Fast to install, snap-in type

QOFP branch circuit

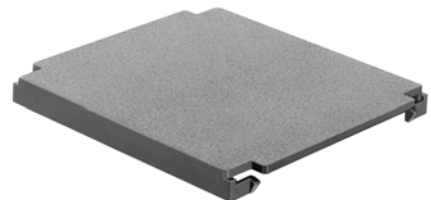
QOM1FP for 70 125 A, single-phase, main circuit breakers

QOM2FP for 150 225 A, single-phase, main circuit breakers

Q2FP for 125 225 A, three-phase, main circuit breakers



**QOFP Cover Filler Plate**



**Q2FP Cover Filler Plate**