

# QO® and Homeline® Load Centers and Enclosures

## General Information and Application Data

### GENERAL INFORMATION AND APPLICATION DATA



QO® Circuit Breaker Load Center

Circuit breaker load centers for use on electrical systems are UL Listed under File E-6294 (panelboards) and meet Federal Specifications W-P-115c, Type 1, Class 2 for use in government housing. Select from QO, QOT, QO-PL, QO-GFI (UL Class A ground fault protection), QO-AFI (arc fault circuit interrupter), QO-CAFI (combination arc fault interrupter), or QO-EPD (30 mA equipment ground fault protection) branch circuit breakers.

#### Service

120 Vac, 1 $\phi$ 2W	240/120 Vac delta, 3 $\phi$ 4W
120/240 Vac, 1 $\phi$ 3W	240 Vac corner grounded delta, 3 $\phi$ 3W
240 Vac delta, 3 $\phi$ 3W	48 Vdc maximum (1 $\phi$ convertible main lug 12 4 2 circuit only)
208Y/120 Vac, 3 $\phi$ 4W	

#### Ratings

	Main Lugs	Main Circuit Breaker
Single-Phase	30 400 A	100 4 00 A
Three-Phase	60 225 A	100 2 25 A



QO  
1-Pole



QO  
2-Pole



QO  
3-Pole



QO-EPD 1-Pole



QO-GFI  
1-Pole



QO-GFI  
2-Pole



QO-AFI 1-Pole



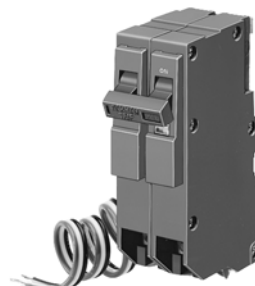
QO-CAFI 1-Pole



QOK, 1-Pole



QO-SWN, 1-Pole



QO-PL 2-Pole

#### Branch Circuit Breakers

10,000 AIR	
QO	1-pole, 10 70 A
	2-pole, 10 12 5 A
	3-pole, 10 10 0 A
QOT	1-pole, 15 20 A
QO-EPD	1-pole, 15 30 A
	2-pole, 15 60 A
QO-GFI	1-pole, 15 30 A
	2-pole, 15 60 A
QO-AFI	1-pole, 15 20 A
QO-CAFI	1-pole, 15 20 A
QO-HID	1-pole, 15 50 A
	2-pole, 15 50 A
	3-pole, 15 30 A
QO-PL QO-PLILC	1-pole, 10 20 A, 30 A
	2-pole, 10 60 A
	3-pole, 15 60 A
QO-SWN	2-wire, 10 50 A
	3-wire, 10 50 A
QOK	1-pole, 10 30 A
22,000 AIR	
QO-VHGF1	1-pole, 15 30 A
QO-VH	1-pole, 15 30 A
	2-pole, 15 12 5 A
	3-pole, 15 10 0 A
QOB-VH	2-pole, 150 A <sup>1</sup>
	3-pole, 110 150 A <sup>1</sup>
42,000 AIR	
QOH	2-pole, 40 12 5 A
65,000 AIR	
QH	1-pole, 15 30 A
	2-pole, 15 30 A
	3-pole, 15 30 A

<sup>1</sup> For use with 300 A and 400 A load centers only. Requires PK3CA mounting kit, ordered separately.

## QO® and Homeline® Load Centers and Enclosures General Information and Application Data

### Single-Phase, 12–42 Circuits, 300–400 A, Fixed Mains

#### UL Listed

File E-6294

Suitable for use as service equipment

75 °C wire rating (see Technical Information on page 20)

#### Short Circuit Current Rating

Main lugs: up to 65,000 AIR

Main circuit breaker: 42,000 AIR fully rated (see Technical Information on page 20)

#### Mains

Factory-installed main lugs and main circuit breaker

Multiple wire terminals for phases and neutral

Top or bottom mains positioning (see Technical Information on page 20)

#### Cover

Flush- and surface-mount covers sold separately

#### Interior

Available in single-phase construction

Interiors accept QO® and QOB-VH 110 150 A maximum circuit breakers (QOB-VH circuit breakers require connector kit PK3CA)

Tin plated aluminum bus

Tin plated copper connector fingers

Neutral assemblies positioned opposite the mains compartment

#### Enclosures

20 in. (508 mm) wide galvanized steel

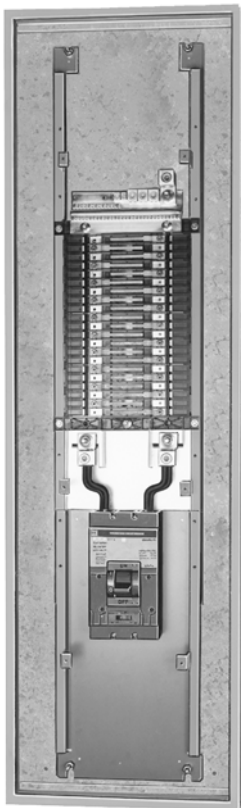
Embossed 0.25 in. (6 mm) standoffs

End walls, one blank and one with knockouts, are standard; both are removable and interchangeable

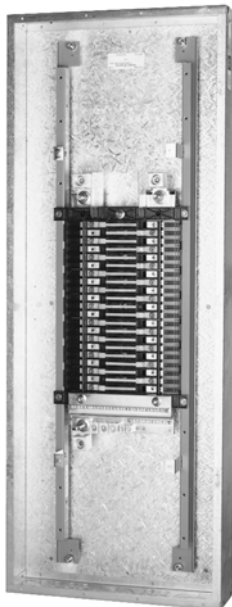
Embossed keyholes centered at both ends and in visual positioning

Multiple grounding bar mounting locations

Wire management braces



QON42MS400 and MH68



QON42LS400 and MH53