

General duty switches(60-600A)

Features



- | | | |
|--|---|---|
| 1. Cover interlock | 5. Generous wiring gutters that meet or exceed NEC wirebending space requirements | 9. Informative door labeling which includes replacement parts list |
| 2. Tangential knockouts through 600A for easy conduit lineup | 6. Visible blade, double-break switch action | 10. Handle and cover padlocking provisions |
| 3. Quick-make, quick-break operating mechanism that ensures positive operation | 7. Positive two- or three-point mounting | 11. Side-hinged door that opens 180 degrees for easier wiring |
| 4. Provisions for T, R, J, H and K class fuses (T & J 200-600A) | 8. Highly visible red handle grip | 12. A unique enclosure design that adds rigidity and strength. Its rolled edge prevents cuts and scrapes to conductors and to installers' hands |

General duty switches



System	Ampere rating	Indoor – Type 1			Outdoor – Type 3R			Horsepower ratings ¹⁾ 240V AC								250 volt DC
		Catalog number	Ship. wgt. (lbs) Std. pkg.	Dwg. fig	Catalog number	Ship. wgt. (lbs) Std. pkg.	Dwg. fig	1-Phase, 2-Wire		2-Phase, 4-Wire		3-Phase, 3-Wire				
								Std.	Max.	Std.	Max.	Std.	Max.	Std.		
240 Volt Fusible																
2-Pole, 2-Fuse, and Solid Neutral ^{2) 3) 4)} 240 Volt AC/250 Volt DC																
	30	GF221N	35 ⁷⁾	1	GF221NR ⁵⁾	35 ⁷⁾	12	1 1/2	3	—	—	3	7 1/2	5		
	60	GF222N	14	4	GF222NR	14	15	3	10	—	—	7 1/2	15	10		
	100	GF223N	23	6	GF223NR	23	17	7 1/2	15	—	—	15	30	20		
	200	GF224N	47	7	GF224NR	48	18	15	—	—	—	25	60	40		
3-Pole, 3-Fuse, and Solid Neutral ⁴⁾ 240 Volt AC/250 Volt DC																
	30	GF321N	24 ⁶⁾	2	GF321NR ⁵⁾	24 ⁶⁾	13	1 1/2	3	—	—	3	7 1/2	5		
	60	GF322N	15	4	GF322NR	15	15	3	10	—	—	7 1/2	15	10		
	100	GF323N	25	7	GF323NR	25	17	7 1/2	15	—	—	15	30	20		
	200	GF324N	49	7	GF324NR	50	18	15	—	—	—	25	60	40		
	400	GF325NA	94.6	9	GF325NRA	94.6	20	15	—	—	—	50	125	50		
	600	GF326NA	95.6	9	GF326NRA	95.6	20	15	—	—	—	75	200	—		
240 Volt Non-Fusible ^{3) 4)}																
2-Pole or 3-Pole 240 Volt AC/250 Volt DC																
	30	GNF321	24 ⁶⁾	2	GNF321R ⁵⁾	24 ⁶⁾	13	—	3	—	—	7 1/2	—	5		
	60	GNF322	12	3	GNF322R	13	14	—	10	—	—	15	—	10		
	100	GNF323	23	6	GNF323R	24	17	—	15	—	—	30	—	20		
	200	GNF324	46	7	GNF324R	47	18	—	15	—	—	60	—	40		
	400	GNF325	114	8	Use 600V Switch — HNF365RA	—	—	—	15	—	—	125	—	50		
	600	GNF326	116	8	Use 600V Switch — HNF366RA	—	—	—	15	—	—	200	—	—		

¹⁾ Dual horsepower ratings: Std.- applies when non-time delay fuses are installed. Max.- applies when time-delay fuses are installed.

²⁾ These switches are UL-listed for application on grounded B-phase systems.

³⁾ Suitable for use on 3-phase motor loads.

⁴⁾ Service entrance labeled.

⁵⁾ Has provision for ECHA type hub.

⁶⁾ 5 switches per standard package.

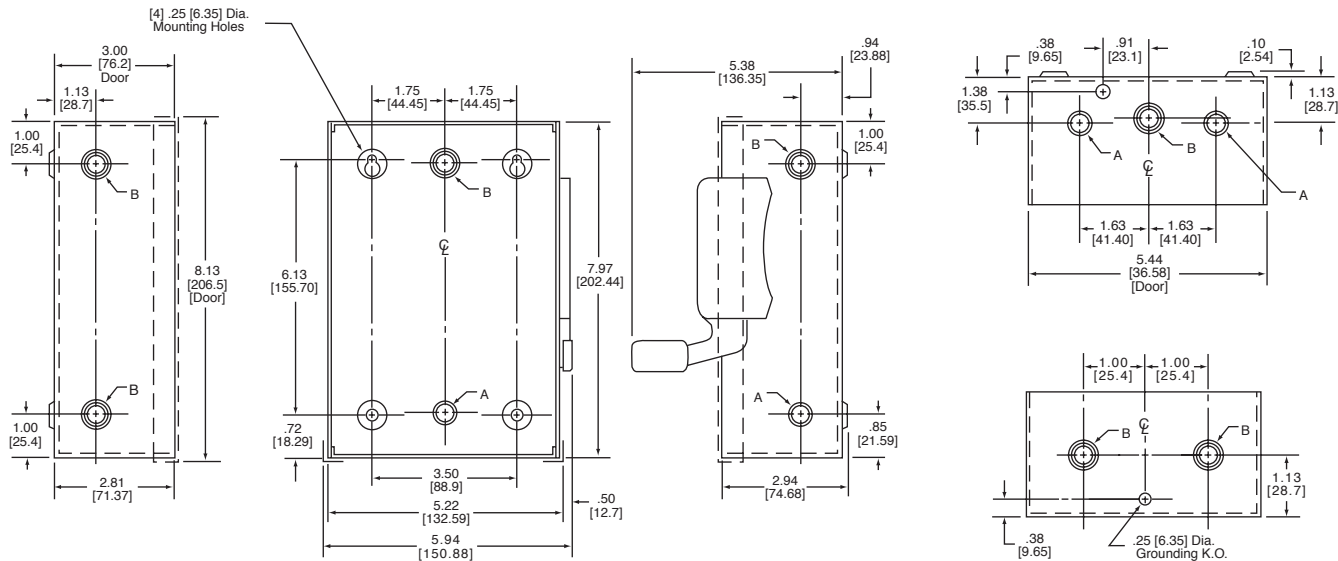
⁷⁾ 10 switches per standard package.

⁸⁾ Height reduced switch (45.25 rather than 56 inches in height) for use with 500MCM or smaller conductors.

Detailed dimension drawings

Type 1 (Indoor)
30 Amp General Duty (2-Pole)

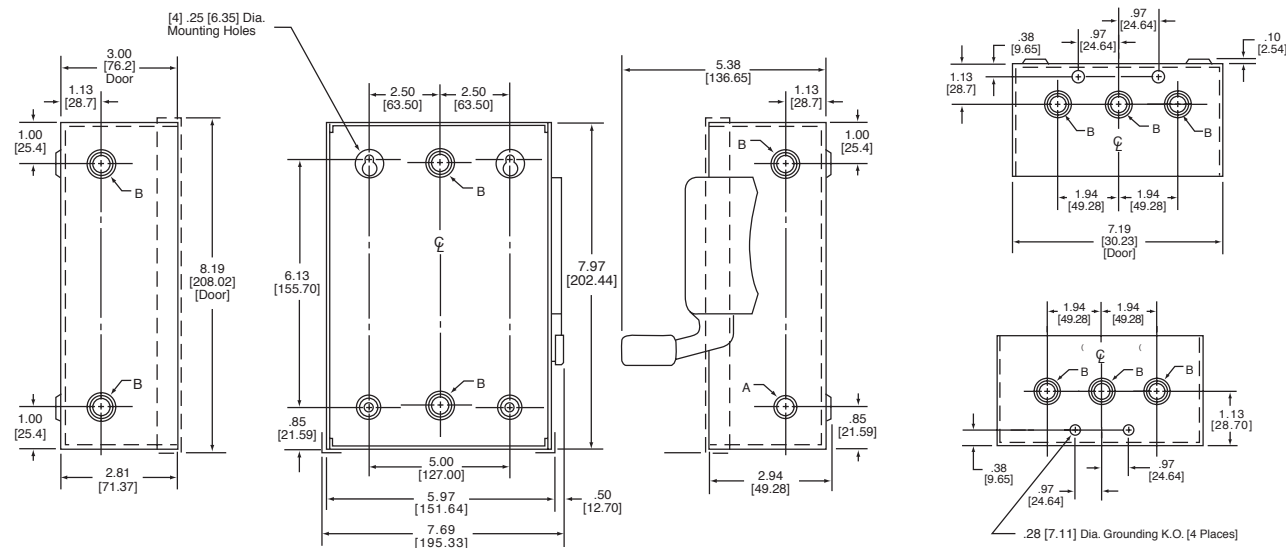
Figure 1



KNOCKOUT CODE	CONDUIT SIZE		
A (Concentric)	.50	.75	
B (Concentric)	.50	.75	1.00

30 Amp General Duty (3-Pole)

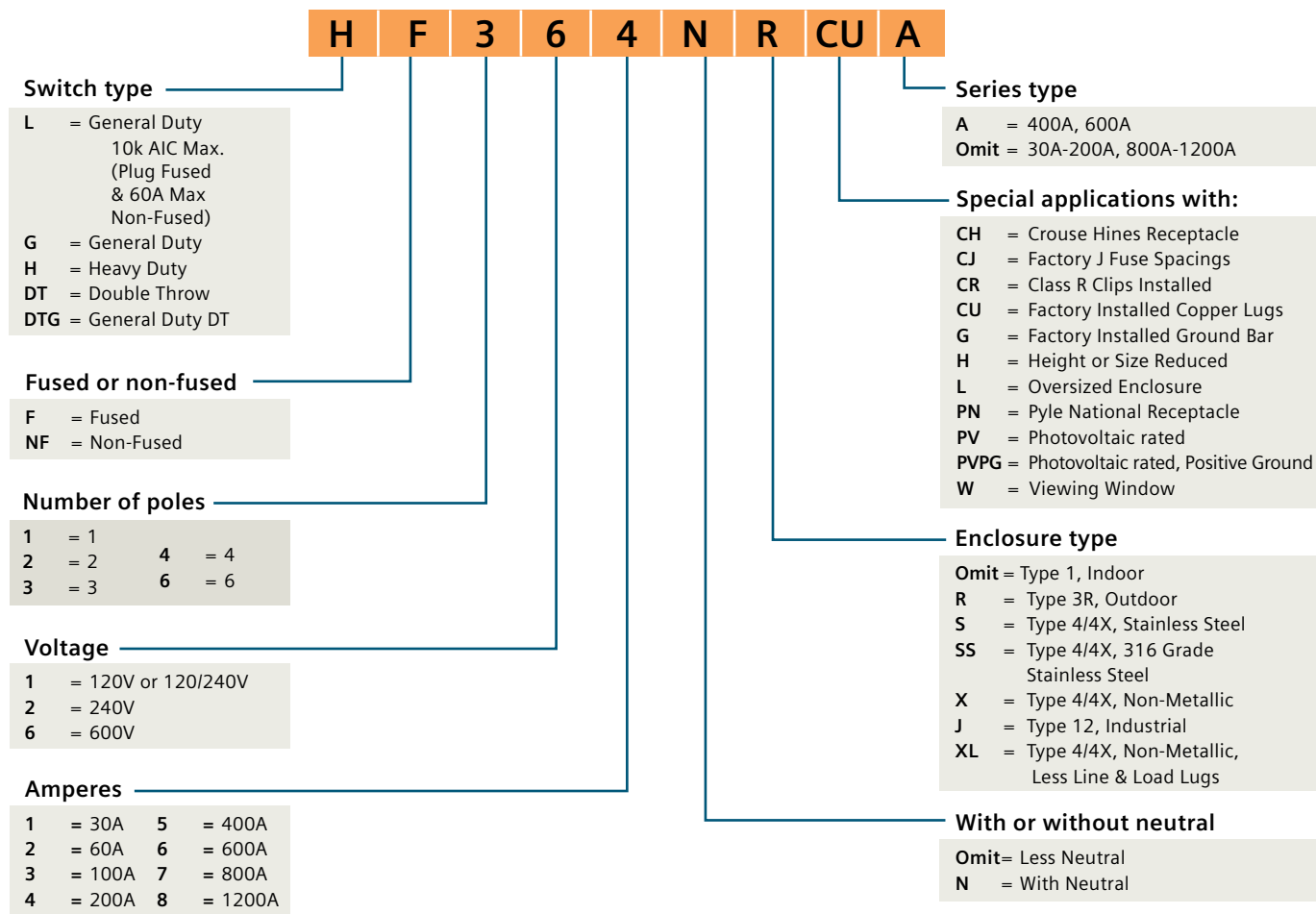
Figure 2



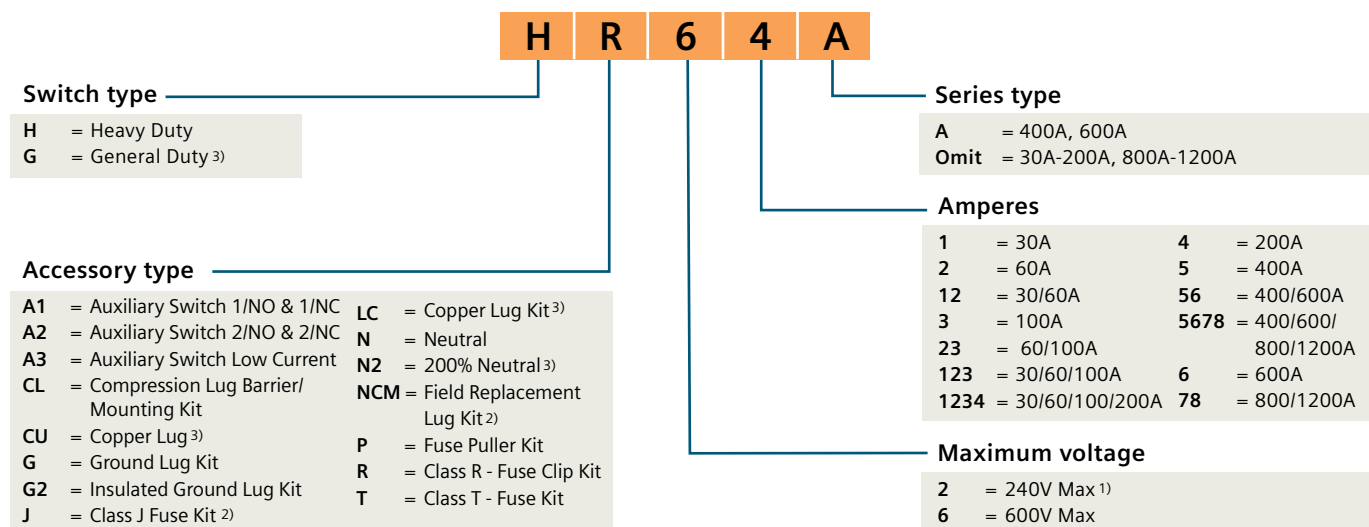
Dimensions shown in inches and millimeters [].
Dimensions shown accurate to $\pm 1/8$ inch.

Type VBII Safety Switch

Catalog numbering system



Accessories catalog numbering system



Note: Catalog numbering systems above do not apply to 4-pole & Type "F" & "FR" double throw switches and accessories.

¹⁾ For 400A, 600A use 680V max accessories except for T Fuse Kit.

²⁾ Only offered for 400A, 600A.

³⁾ For 30A-200A, 800A-1200A.