

SWAROVSKI

L I G H T I N G

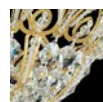


TIARA - SCHONBEK

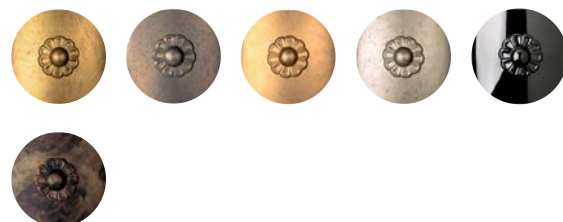
9849

Inspired by the bejeweled coronets worn by the ladies of nobility, Tiara is an original Schonbek design. Its sophisticated lace-like frame is adorned with tiny crystal beads, as if sparkling from within. The basket of crystals falling from the crown recalls the lines of Empire-style chandeliers while creating a timeless majestic feel.

OPTIONS



SPECTRA (A)



-22, -23, -26, -48, -55, -76

MORE TIARA

9800	9801	9802
9803	9841	9843
9845	9847	

SPECIFICATIONS

Width/Length:	24.5in / 62cm
↕ Height:	29in / 74cm
⬇ Chain Length:	40in / 102cm
⬇ Hang Weight:	16lbs / 7.2kg
Tier Count:	1
Light Source:	Incandescent Bulb
Bulb Count:	9
Bulb Info:	(5) E12, 60 MAX, B10** (4) E12, 60 MAX, G16-1/2**

*Bulb Included **Bulb Not Included

- SWAROVSKI-LIGHTING.COM/SCHONBEK
- [VIEW](#)
- [CONNECT](#)
- [WHERE TO BUY](#)



SCHONBEK®