

# Additional LASCO components for complete assemblies:

## CAP



PART NO.	SIZE	BAG	CTN
	(IN.)	(QTY.)	(QTY.)
448-010*	1" FIPT	--	50

\* Please reference Sch 40 sheet for pricing.

## FEMALE ADAPTER



PART NO.	SIZE	BAG	CTN
	(IN.)	(QTY.)	(QTY.)
1435-005*	1/2" INSERT x FIPT	--	30
1435-007*	3/4" INSERT x FIPT	--	30
1435-010*	1" INSERT x FIPT	--	30

\* Please reference Insert sheet for pricing.

## PLUG



PART NO.	SIZE	BAG	CTN
	(IN.)	(QTY.)	(QTY.)
450-010*	1" MIPT	--	50

\* Please reference Sch 40 sheet for pricing.

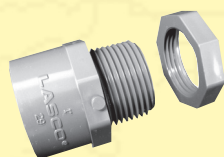
## MALE ADAPTER



PART NO.	SIZE	BAG	CTN
	(IN.)	(QTY.)	(QTY.)
1436-005	1/2" INSERT x MIPT	--	50
1436-007	3/4" INSERT x MIPT	--	50
1436-010	1" INSERT x MIPT	--	40

\* Please reference Insert sheet for pricing.

## More Great Products from LASCO...



The all PVC **LoVolt Adapter** connects electrical conduit to a controller box and is topped off with a nut. Securing the adapter to PVC pipe or conduit can be achieved by solvent welding.



Our re-designed **White Union**, with its low profile design and Buna o-rings, is a perfect example of cutting edge technology and familiar performance.

To install a standard female thread nozzle directly to a riser - no sprinkler head required - use LASCO's 1/2" plastic **Shrub Adapter**. This is perfect solution for irrigating ground cover, shrubs and flower bed.



The **896 Series of Gray Unions** are the solution for installation in valve-boxes and double-checks for ResCom irrigation systems. The LASCO products are factory assembled using our new 235 psi rated union and a molded Thread One End (TOE) Nipple.



**Side Outlet Elbows** can be used for building strong, light-weight PVC structures. Common applications include soccer goals, ball bins, sports racks and swimming pool games.

When installation of greens, traps, pools or other obstacles requires piping to follow contours, and the PVC is too stiff for the bends, then use this injection molded 22 1/2° **Elbow**.



**LASCO also carries:**  
**Schedule 40, Schedule 80, Schedule 80 CPVC**  
**Large Diameter (Sch 40, DWV Class 125)**  
**DWV, Inserts, Nipples**

**LASCO**®  
**Fittings, Inc.**