

Central Brass

C O M P A N Y

Brecksville, Ohio 44141

Phone: (216) 883-0220 Fax: (440) 526-5745

www.CentralBrass.com

**MODEL NO. 0239-C
0239-H or 0239-P
LAVATORY FAUCET**

0239-C (Cold index)

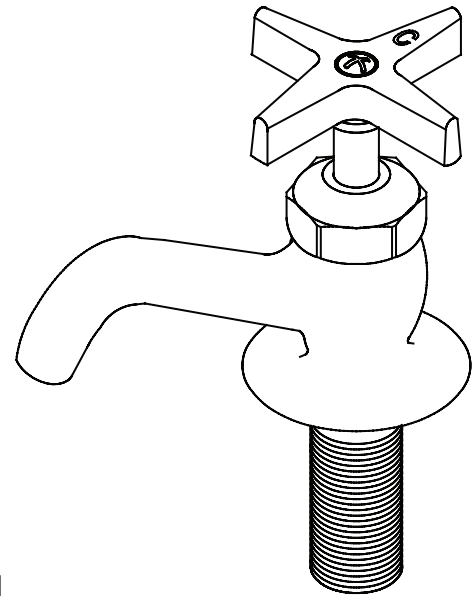
0239-H (Hot index)

0239-P (Plain no index)

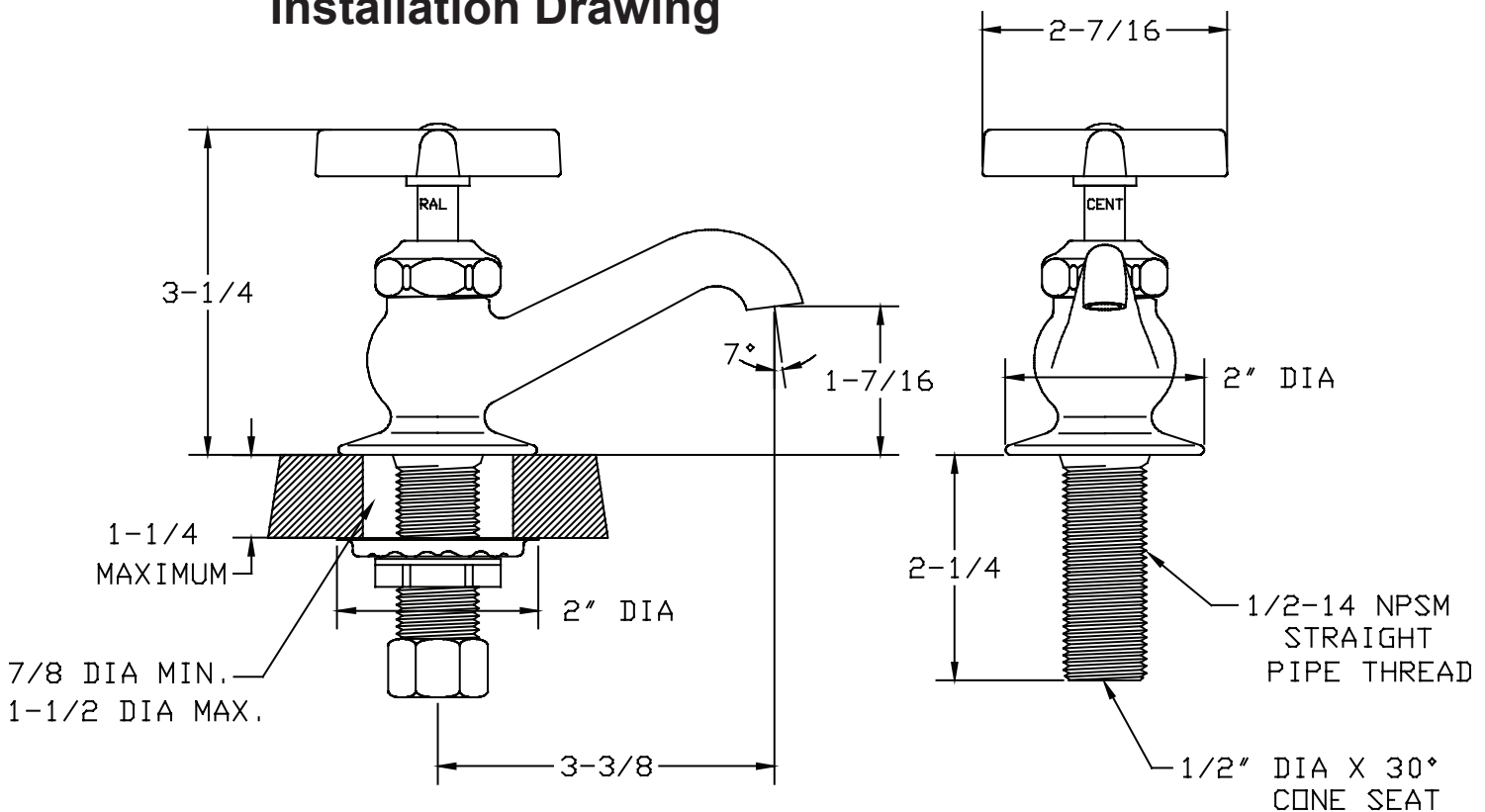
The lavatory faucet has a solid cast brass body with a replaceable seat. The stem is brass with a replaceable rubber seat washer. The replaceable seat is chrome plated brass. The cross handle is zinc with a chrome plated finish and is indexed with a C (cold), H (hot) or is plain with no indexed marking. The faucet packing is a reinforced rubber. The body and packing nut are polished and chrome plated.

ASME A112.18.1M

ANSI/NSF/Section 9 Certified



Installation Drawing



Central Brass

C O M P A N Y

Brecksville, Ohio 44141

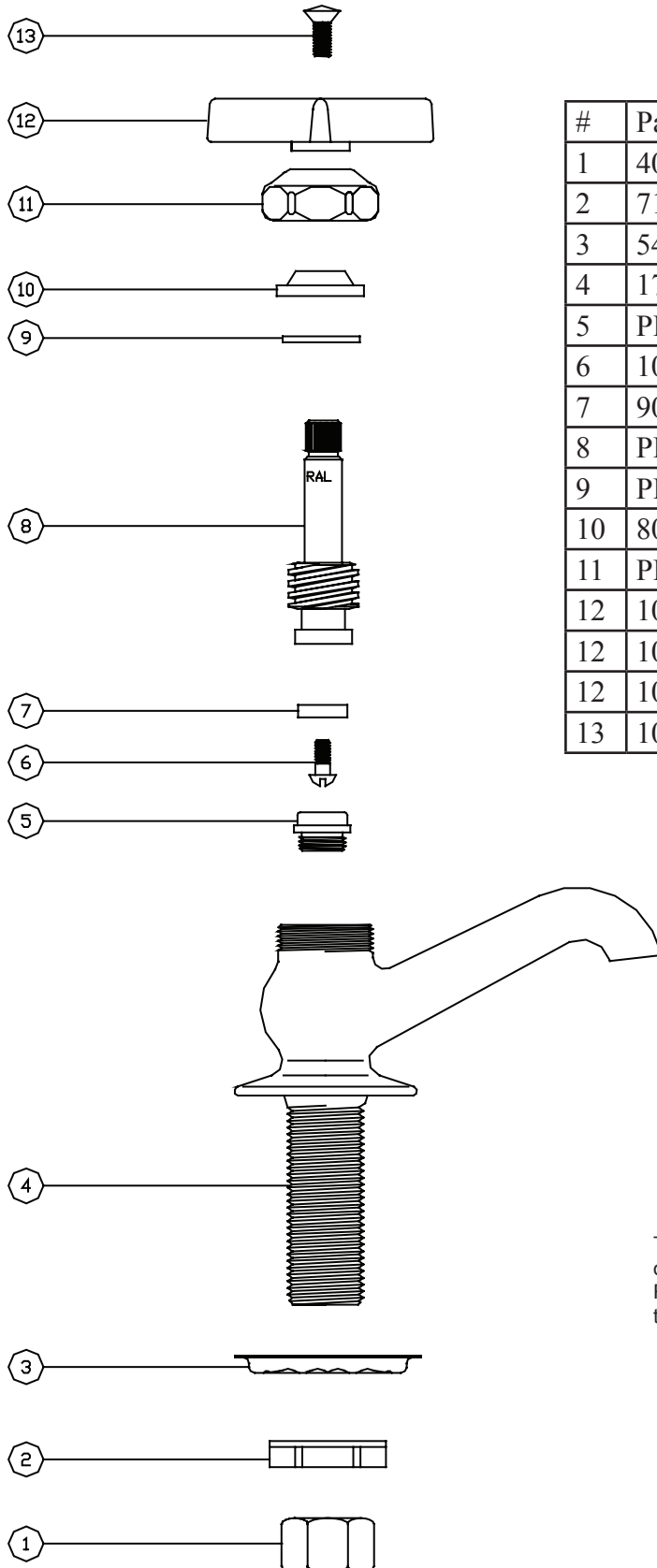
Phone: (216) 883-0220 Fax: (440) 526-5745

www.CentralBrass.com

**MODEL NO. 0239-C
0239-H or 0239-P
LAVATORY FAUCET**

Parts Breakdown

#	Part #	Description
1	4015-BARP	Brass Coupling Nut
2	7133-AZ	Zinc Dichromate Locknut
3	54	Steel Crowfoot Washer
4	1702-RLA	Brass Faucet Body
5	PF-263-B	Brass Seat
6	104	Brass Seat Washer Screw
7	901-WNN	Seat Washer
8	PF-1858-AP	Brass Stem
9	PF-4	Brass Washer
10	809	Packing
11	PF-460	Brass Cap Nut
12	1045-SCM	4 Arm Handle - Indexed "C"
12	1045-SHM	4 Arm Handle - Indexed "H"
12	1043	4 Arm Handle - No Index
13	107-F	Brass Phillips Head Screw



The parts listed in the parts breakdown above may not be offered separately as replacement parts. Please review the Replacement Parts page for the authorized replacement parts that are available for this item.