

## Class 150 (Standard)

# FIGURES 3110, 3111 and 3112

## Plugs



For Listings/Approval Details and Limitations, visit our website at [www.anvilintl.com](http://www.anvilintl.com) or contact an Anvil® Sales Representative.

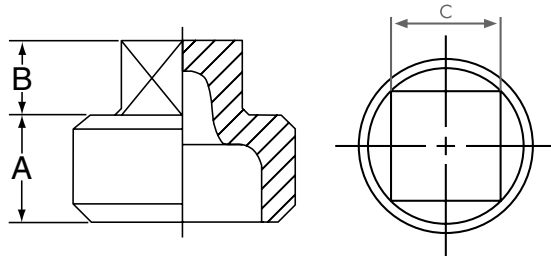


Fig. 3110 (Solid Square) or  
Fig. 3111 (Cored Square)



Fig. 3112 (Cored Bar)

| PLUGS          |              |            |          |          |                  |
|----------------|--------------|------------|----------|----------|------------------|
| Figure Numbers | Nominal Size | Dimensions |          |          | Approx. Wt. Each |
|                |              | A          | B        | C        |                  |
|                | In. (mm)     | In. (mm)   | In. (mm) | In. (mm) | Lbs. (kg)        |
| 3110 - Solid   | 1/4          | 0.44       | 0.28     | 0.38     | 0.04             |
|                | 8            | 11.18      | 7.11     | 9.65     | 0.02             |
| 3110 - Solid   | 3/8          | 0.48       | 0.31     | 0.44     | 0.06             |
|                | 10           | 12.19      | 7.81     | 11.18    | 0.03             |
| 3111 - Cored   | 1/2          | 0.56       | 0.38     | 0.56     | 0.08             |
|                | 15           | 14.22      | 9.65     | 14.22    | 0.04             |
| 3111 - Cored   | 3/4          | 0.63       | 0.44     | 0.63     | 0.13             |
|                | 20           | 16.00      | 11.18    | 16.00    | 0.06             |
| 3111 - Cored   | 1            | 0.75       | 0.50     | 0.81     | 0.20             |
|                | 25           | 19.05      | 12.70    | 20.57    | 0.09             |
| 3111 - Cored   | 1 1/4        | 0.80       | 0.56     | 0.94     | 0.32             |
|                | 32           | 20.32      | 14.22    | 23.88    | 0.15             |
| 3111 - Cored   | 1 1/2        | 0.83       | 0.62     | 1.13     | 0.43             |
|                | 40           | 21.08      | 15.75    | 28.70    | 0.20             |
| 3111 - Cored   | 2            | 0.88       | 0.68     | 1.31     | 0.67             |
|                | 50           | 22.35      | 17.27    | 33.27    | 0.30             |
| 3111 - Cored   | 2 1/2        | 1.07       | 0.74     | 1.50     | 1.11             |
|                | 65           | 27.18      | 18.80    | 38.10    | 0.50             |
| 3111 - Cored   | 3            | 1.13       | 0.80     | 1.69     | 1.53             |
|                | 80           | 28.70      | 20.32    | 42.93    | 0.69             |
| 3112 - Bar     | 4            | 1.22       | 1.00     | —        | 2.71             |
|                | 100          | 30.99      | 25.40    | —        | 1.23             |
| 3112 - Bar     | 6            | 1.40       | 1.25     | —        | 4.00             |
|                | 150          | 35.56      | 31.75    | —        | 1.81             |

## MATERIAL SPECIFICATIONS

Dimensions: Fittings: ASME B16.3  
Unions: ASME B16.39  
Bushings/Plugs: ASME B16.14

Material: ASTM A-197

Finish: Black or Hot Dip Galvanized per ASTM A153 Class A

Threads\*: NPT per ASME B1.20.1

Pressure Ratings: Fittings: ASME B16.3  
Unions: ASME B16.39  
Bushings/Plugs: ASME B16.14

Pressure Testing: All malleable iron fittings are tested for through wall porosity using an air under water process.

Agency Approvals: All malleable iron fittings and unions are UL/ULC Listed and FM Approved.

\* British Standard threading per BS 21 available upon request.

Note: Figures 3110 and 3111 are square head plugs; solid or cored. Figure 3112 are cored bar plugs.

## PROJECT INFORMATION

## APPROVAL STAMP

|                        |  |
|------------------------|--|
| <b>Project:</b>        | <input type="checkbox"/> Approved          |
| <b>Address:</b>        | <input type="checkbox"/> Approved as noted |
| <b>Contractor:</b>     | <input type="checkbox"/> Not approved      |
| <b>Engineer:</b>       | <b>Remarks:</b>                            |
| <b>Submittal Date:</b> |  |
| <b>Notes 1:</b>        |  |
| <b>Notes 2:</b>        |  |